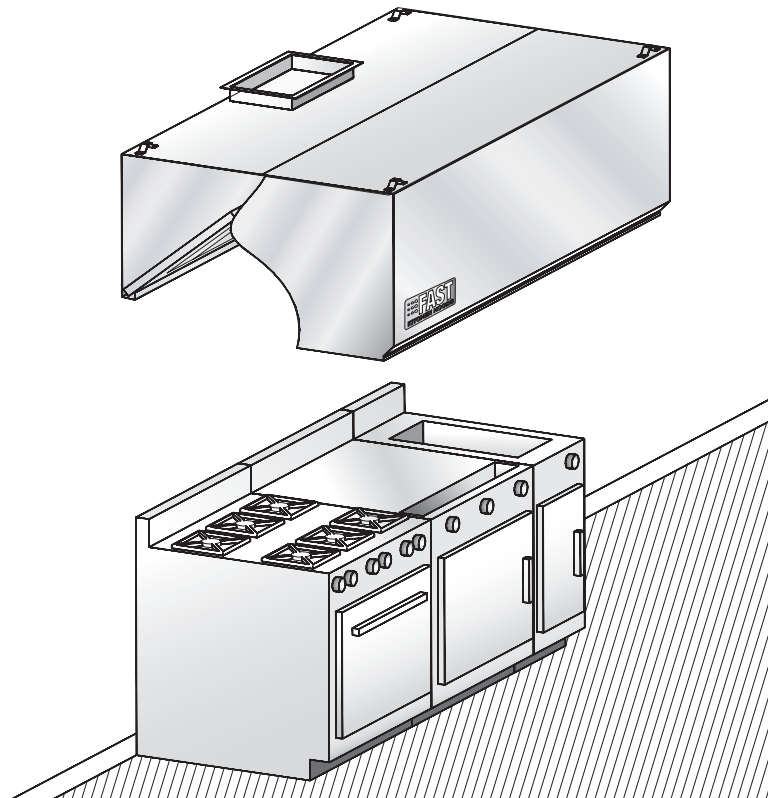




When Time **Matters!**

## Model **SSH** - FILTER HOOD


**A**



### **Description:**

FAST wall-type exhaust hood model SSH complete with baffle filters.

### **Specifications:**

- Constructed of sturdy 18-gauge (1.2 mm) stainless steel
- Available in lengths of 3' 0" to 16' 0" (914 mm to 4,877 mm)
- Washable baffle filters
- Easy installation
- Listed NSF, ETL and 
- Many options available (see reverse)
- Quick delivery

### **Enclosure panels (optional):**

The space between the top of the hood and the ceiling may be closed with stainless steel panels in the same finish as the hood.

### **Construction:**

Exposed hood surface: type 430 stainless steel (304 optional) with #4 finish (brushed). Non-exposed hood surface: stainless steel with #2B finish. Minimum 18-gauge (1.2 mm) thickness. All visible welded joints are polished to match original finish. To meet NFPA- 96 requirements.

### **Installation:**

Suspension (recommended height)

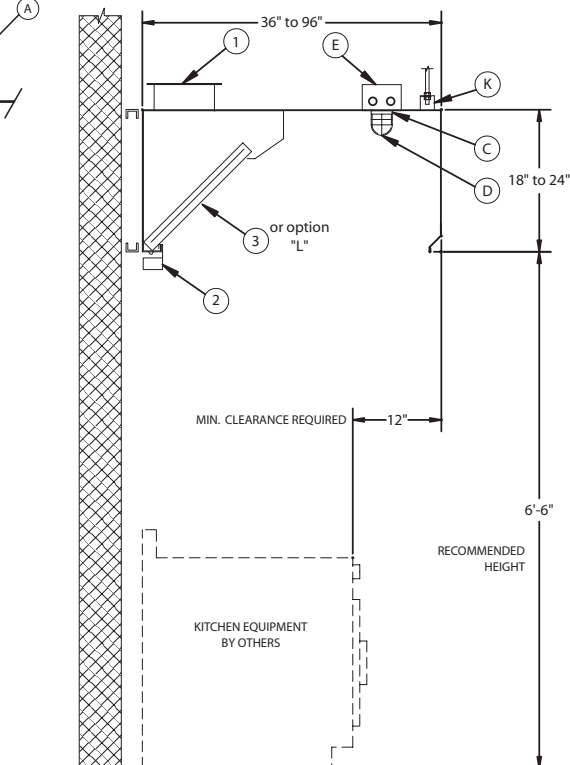
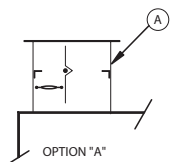
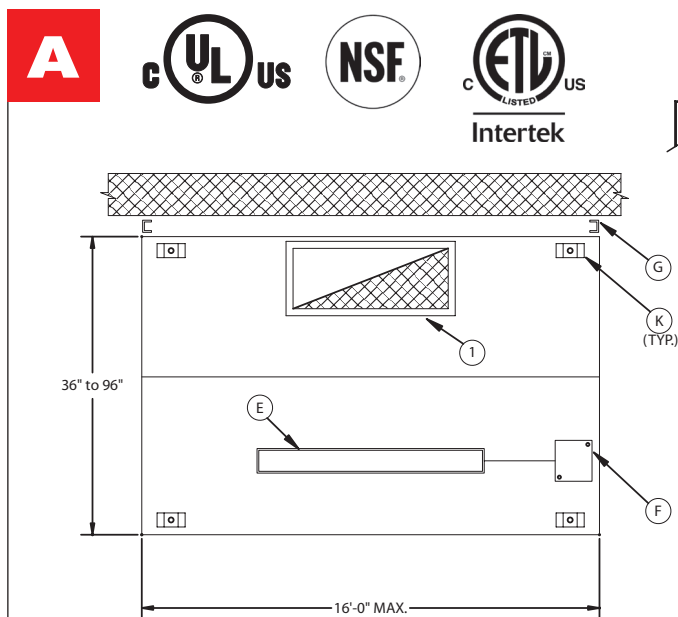
The hood should be installed 6' 6" (1,981 mm) from the floor.

Semi-combustible materials

A clearance of 3" (76 mm) is required when the hood is in contact with semi-combustible materials. As per NFPA-96 standards, a stainless steel spacer will be required.

### **Electrical:**

Junction box and pre-wiring for lighting system may be factory installed if required.



260 CFM (125 L / S) / Linear Ft. *					
Length		Exhaust		Collar/opening 10" (254 mm) x _____	
Feet	mm	CFM	L/S	Inches	mm
3'-6"	1068	910	430	10	254
4'-0"	1220	1040	490	12	305
4'-6"	1372	1170	550	12	305
5'-0"	1524	1300	615	14	355
5'-6"	1676	1430	675	16	405
6'-0"	1828	1560	735	16	405
6'-6"	1981	1690	800	18	457
7'-0"	2134	1820	860	20	508
7'-6"	2286	1950	920	22	558
8'-0"	2438	2080	980	24	610
8'-6"	2590	2210	1045	24	610
9'-0"	2743	2340	1105	26	660
9'-6"	2895	2470	1165	28	711
10'-0"	3048	2600	1230	28	711
10'-6"	3200	2730	1290	30	762
11'-0"	3352	2860	1350	32	812
11'-6"	3505	2960	1410	(2) 16	(2) 405
12'-0"	3657	3120	1470	(2) 18	(2) 457
12'-6"	3810	3250	1535	(2) 18	(2) 457
13'-0"	3962	3380	1595	(2) 18	(2) 457
13'-6"	4115	3510	1635	(2) 20	(2) 508
14'-0"	4267	3640	1720	(2) 20	(2) 508
14'-6"	4420	3770	1780	(2) 20	(2) 508
15'-0"	4572	3900	1840	(2) 22	(2) 558
15'-6"	4724	4030	1900	(2) 22	(2) 558
16'-0"	4877	4160	1965	(2) 24	(2) 610

\* Exhaust for 42" (1,065 mm) and 48" (1,220 mm)-deep hoods.

## Accessories included:

1	Exhaust collar (3" high)
2	Grease receptacle
3	ETL-listed galvanized steel baffle filters
C	Incandescent lights (Quantity recommended: (1) light per 5 linear feet of hood)
G	3" rear spacer for clearance to meet NFPA- 96 requirements
K	Hanging brackets

## Optional accessories: (see section "K" for details)

A	ETL-listed exhaust collar with fire damper
B	ETL-listed exhaust collar with balancing damper
D	Wire guard for incandescent lights
E	36" or 48" fluorescent lights (Quantity recommended: (1) light per 8 linear feet of hood)
F	Junction box and pre-wiring for lighting
H	Enclosure panels, stainless steel with #4 finish, between hood and ceiling
I	PAC-02 programmable control panel
J	End skirts should be used to maximize hood performance
L	ETL-listed stainless steel baffle filters
M	DDSP (Down Discharge Supply Plenum)
N	FDSP (Front Discharge Supply Plenum)
O	ETL-listed end of day damper

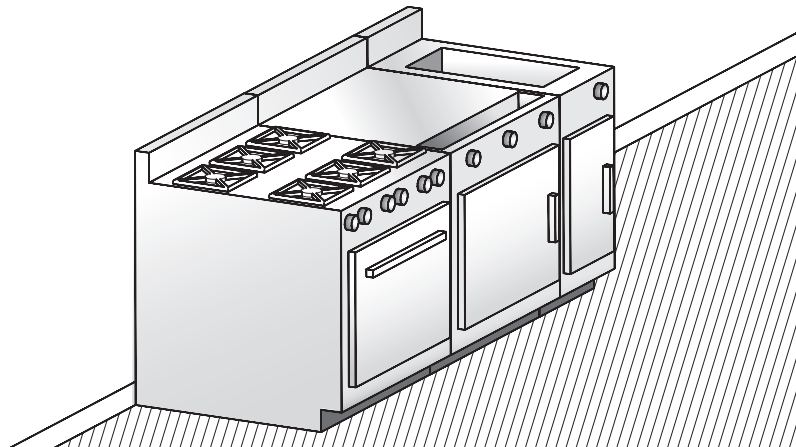
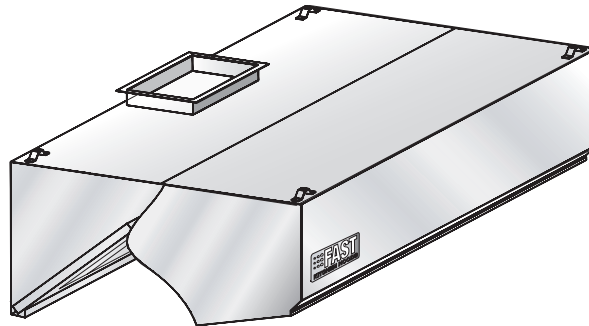
	Exhaust VOLUME (CFM / Lin. Ft.)	Internal pressure loss (IN / H <sub>2</sub> O)	Exhaust VOLUME (L/S per linear metre)	Internal pressure loss (Pa)
Light cooking	175	0,30	270	75
Medium cooking	260	0,40	400	100
Heavy cooking	350	0,60	540	150



When Time **Matters!**

## Model **LP-SSH** - **FILTER HOOD**


**A**



### **Description:**

FAST wall-type exhaust hood model LP-SSH complete with baffle filters. For low-ceiling kitchens.

### **Specifications:**

- Constructed of sturdy 18-gauge (1.2 mm) stainless steel
- Available in lengths of 3' 0" to 16' 0" (914 mm to 4,877 mm)
- Washable baffle filters
- Specially designed for low-ceiling kitchens
- Easy installation
- Listed NSF, ETL and 
- Many options available (see reverse)
- Quick delivery

### **Enclosure panels (optional):**

The space between the top of the hood and the ceiling may be closed with stainless steel panels in the same finish as the hood.

### **Construction:**

Exposed hood surface: type 430 stainless steel (304 optional) with #4 finish (brushed). Non-exposed hood surface: stainless steel with #2B finish. Minimum 18-gauge (1.2 mm) thickness. All visible welded joints are polished to match original finish. To meet NFPA- 96 requirements.

### **Installation:**

Suspension (recommended height)

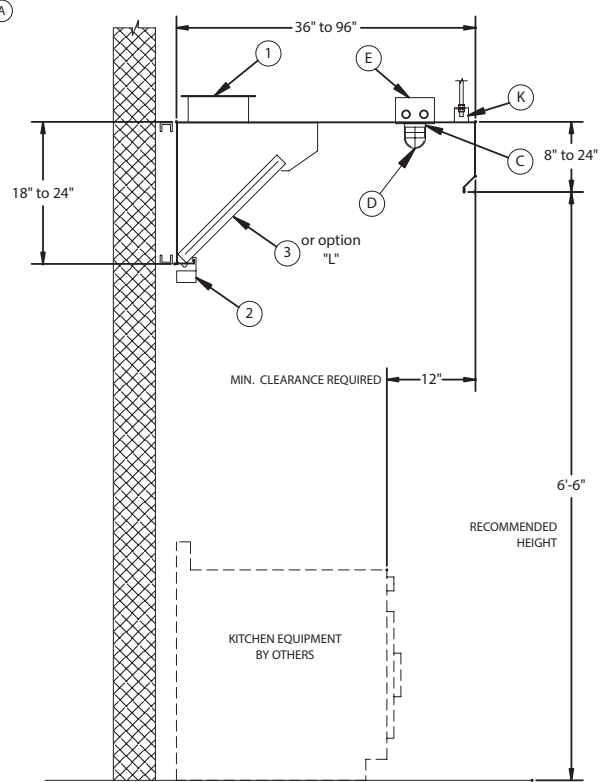
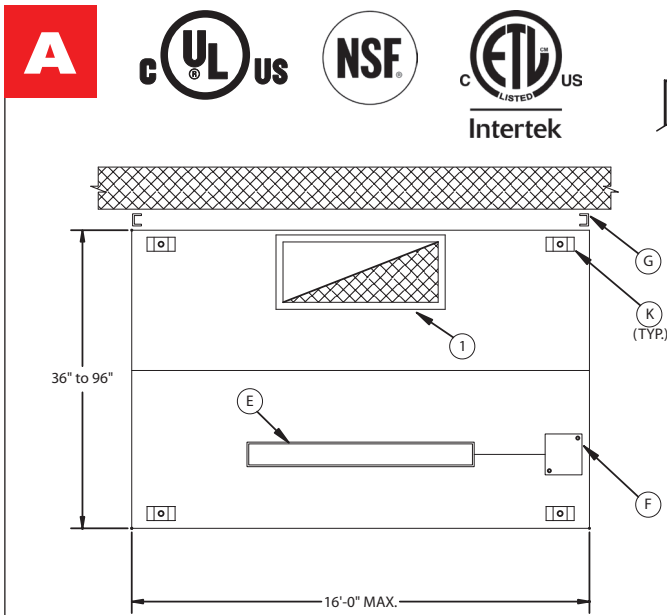
The hood should be installed 6' 6" (1,981 mm) from the floor.

Semi-combustible materials

A clearance of 3" (76 mm) is required when the hood is in contact with semi-combustible materials. As per NFPA-96 standards, a stainless steel spacer will be required.

### **Electrical:**

Junction box and pre-wiring for lighting system may be factory installed if required.



260 CFM (125 L / S) / Linear Ft. *					
Length		Exhaust		Collar/opening 10" (254 mm) x _____	
Feet	mm	CFM	L/S	Inches	mm
3'-6"	1068	910	430	10	254
4'-0"	1220	1040	490	12	305
4'-6"	1372	1170	550	12	305
5'-0"	1524	1300	615	14	355
5'-6"	1676	1430	675	16	405
6'-0"	1828	1560	735	16	405
6'-6"	1981	1690	800	18	457
7'-0"	2134	1820	860	20	508
7'-6"	2286	1950	920	22	558
8'-0"	2438	2080	980	24	610
8'-6"	2590	2210	1045	24	610
9'-0"	2743	2340	1105	26	660
9'-6"	2895	2470	1165	28	711
10'-0"	3048	2600	1230	28	711
10'-6"	3200	2730	1290	30	762
11'-0"	3352	2860	1350	32	812
11'-6"	3505	2960	1410	(2) 16	(2) 405
12'-0"	3657	3120	1470	(2) 18	(2) 457
12'-6"	3810	3250	1535	(2) 18	(2) 457
13'-0"	3962	3380	1595	(2) 18	(2) 457
13'-6"	4115	3510	1635	(2) 20	(2) 508
14'-0"	4267	3640	1720	(2) 20	(2) 508
14'-6"	4420	3770	1780	(2) 20	(2) 508
15'-0"	4572	3900	1840	(2) 22	(2) 558
15'-6"	4724	4030	1900	(2) 22	(2) 558
16'-0"	4877	4160	1965	(2) 24	(2) 610

\* Exhaust for 42" (1,065 mm) and 48" (1,220 mm)-deep hoods.

Accessories included:	
1	Exhaust collar (3" high)
2	Grease receptacle
3	ETL-listed galvanized steel baffle filters
C	Incandescent lights (Quantity recommended: (1) light per 5 linear feet of hood)
G	3" rear spacer for clearance to meet NFPA- 96 requirements
K	Hanging brackets

Optional accessories: (see section "K" for details)	
A	ETL-listed exhaust collar with fire damper
B	ETL-listed exhaust collar with balancing damper
D	Wire guard for incandescent lights
E	36" or 48" fluorescent lights (Quantity recommended: (1) light per 8 linear feet of hood)
F	Junction box and pre-wiring for lighting
H	Enclosure panels, stainless steel with #4 finish, between hood and ceiling
I	PAC-02 programmable control panel
J	End skirts should be used to maximize hood performance
L	ETL-listed stainless steel baffle filters
M	DDSP (Down Discharge Supply Plenum)
N	FDSP (Front Discharge Supply Plenum)
O	ETL-listed end of day damper

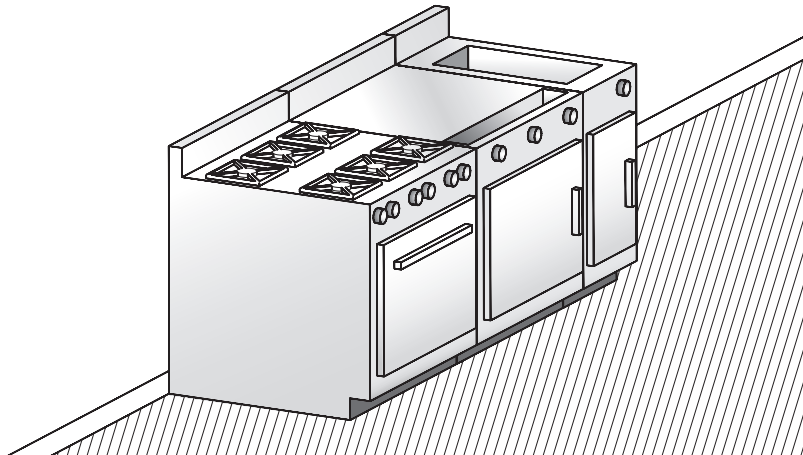
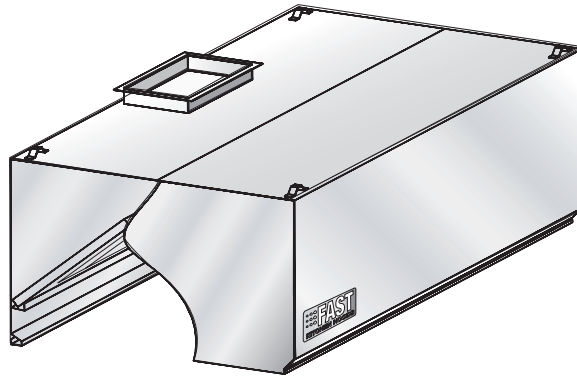
	Exhaust VOLUME (CFM / Lin. Ft.)	Internal pressure loss (IN / H <sub>2</sub> O)	Exhaust VOLUME (L/S per linear metre)	Internal pressure loss (Pa)
Light cooking	175	0,30	270	75
Medium cooking	260	0,40	400	100
Heavy cooking	350	0,60	540	150



When Time **Matters!**

## Model **PS-SSH** - **FILTER HOOD**


**A**



### **Description:**

FAST wall-type exhaust hood model PS-SSH complete with baffle filters. For heavy cooking applications (woks, charbroilers, live charcoal, etc.).

### **Specifications:**

- Constructed of sturdy 18-gauge (1.2 mm) stainless steel.
- Available in lengths of 3' 0" to 16' 0" (914 mm to 4,877 mm)
- Washable baffle filters
- Easy installation
- Listed NSF, ETL and 
- Many options available (see reverse)
- Quick delivery

### **Enclosure panels (optional):**

The space between the top of the hood and the ceiling may be closed with stainless steel panels in the same finish as the hood.

### **Construction:**

Exposed hood surface: type 430 stainless steel (304 optional) with #4 finish (brushed). Non-exposed hood surface: stainless steel with #2B finish. Minimum 18-gauge (1.2 mm) thickness. All visible welded joints are polished to match original finish. To meet NFPA- 96 requirements.

### **Installation:**

Suspension (recommended height)

The hood should be installed 6' 6" (1,981 mm) from the floor.

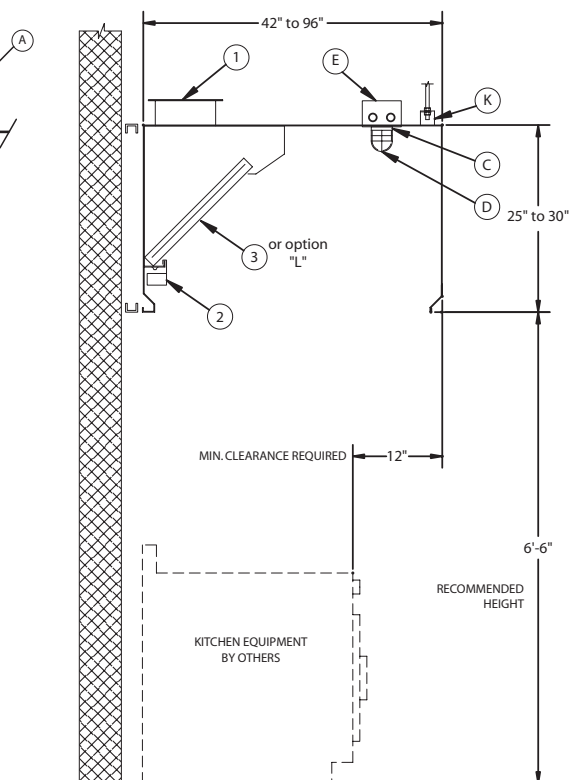
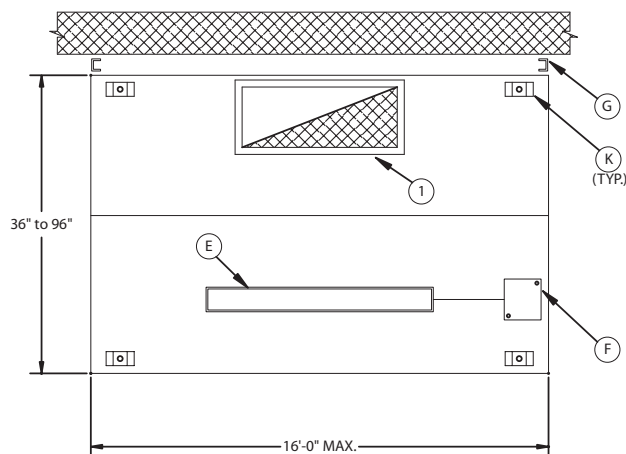
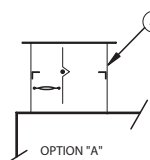
Semi-combustible materials

A clearance of 3" (76 mm) is required when the hood is in contact with semi-combustible materials. As per NFPA-96 standards, a stainless steel spacer will be required.

### **Electrical:**

Junction box and pre-wiring for lighting system may be factory installed if required.





Exhaust 350 CFM (165 L / S) / Linear Ft. *					
Length		Exhaust		Collar/opening 12" (305 mm) x _____	
Feet	mm	CFM	L/S	Inches	mm
3'-6"	1068	1225	580	12	305
4'-0"	1220	1400	660	12	305
4'-6"	1372	1575	745	14	355
5'-0"	1524	1750	825	16	405
5'-6"	1676	1925	910	18	455
6'-0"	1828	2100	990	18	455
6'-6"	1981	2275	1075	20	510
7'-0"	2134	2450	1155	22	560
7'-6"	2286	2625	1240	24	610
8'-0"	2438	2800	1320	26	660
8'-6"	2590	2975	1400	26	660
9'-0"	2743	3150	1485	28	710
9'-6"	2895	3325	1570	30	760
10'-0"	3048	3500	1650	32	810
10'-6"	3200	3675	1735	(2) 16	(2) 405
11'-0"	3352	3850	1815	(2) 18	(2) 455
11'-6"	3505	4025	1900	(2) 18	(2) 455
12'-0"	3657	4200	1980	(2) 18	(2) 455
12'-6"	3810	4375	2065	(2) 20	(2) 510
13'-0"	3962	4550	2145	(2) 20	(2) 510
13'-6"	4115	4725	2230	(2) 22	(2) 560
14'-0"	4267	4900	2310	(2) 22	(2) 560
14'-6"	4420	5075	2395	(2) 22	(2) 560
15'-0"	4572	5250	2475	(2) 24	(2) 610
15'-6"	4724	5425	2560	(2) 24	(2) 610
16'-0"	4877	5600	2640	(2) 26	(2) 660

\* Exhaust for 42" (1,065 mm) and 48" (1,220 mm)-deep hoods.

Accessories included:	
<b>1</b>	Exhaust collar (3" high)
<b>2</b>	Grease receptacle
<b>3</b>	listed galvanized steel baffle filters
<b>C</b>	Incandescent lights (Quantity recommended: (1) light per 5 linear feet of hood)
<b>G</b>	3" rear spacer for clearance to meet NFPA- 96 requirements
<b>K</b>	Hanging brackets

Optional accessories: (see section "K" for details)	
<b>A</b>	listed exhaust collar with fire damper
<b>B</b>	listed exhaust collar with balancing damper
<b>D</b>	Wire guard for incandescent lights
<b>E</b>	36" or 48" fluorescent lights (Quantity recommended: (1) light per 8 linear feet of hood)
<b>F</b>	Junction box and pre-wiring for lighting
<b>H</b>	Enclosure panels, stainless steel with #4 finish, between hood and ceiling
<b>I</b>	PAC-02 programmable control panel
<b>J</b>	End skirts should be used to maximize hood performance
<b>L</b>	listed stainless steel baffle filters
<b>M</b>	DDSP (Down Discharge Supply Plenum)
<b>N</b>	FDSP (Front Discharge Supply Plenum)
<b>O</b>	ETL-listed end of day damper

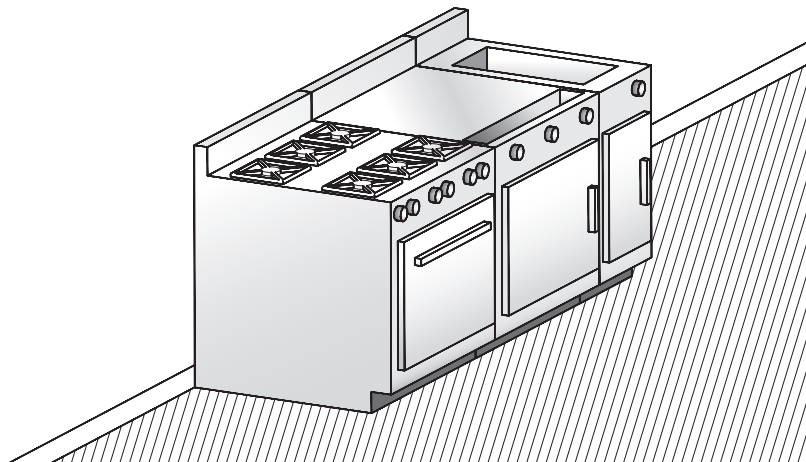
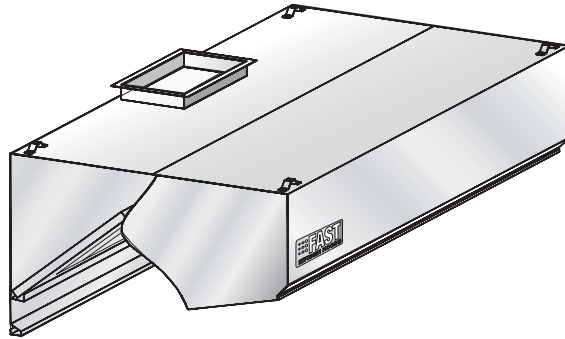
	Exhaust VOLUME (CFM / Lin. Ft.)	Internal pressure loss (IN / H <sub>2</sub> O)	Exhaust VOLUME (L/S per linear metre)	Internal pressure loss (Pa)
<b>Light cooking</b>	175	0,30	270	75
<b>Medium cooking</b>	260	0,40	400	100
<b>Heavy cooking</b>	350	0,60	540	150



When Time **Matters!**

## Model **PS-LP-SSH** - **FILTER HOOD**


**A**



### **Description:**

FAST wall-type exhaust hood model PS-LP-SSH complete with baffle filters. For heavy cooking applications (woks, charbroilers, live charcoal, etc.) and low-ceiling kitchens

### **Specifications:**

- Constructed of sturdy 18-gauge (1.2 mm) stainless steel.
- Available in lengths of 3' 0" to 16' 0" (914 mm to 4,877 mm)
- Washable baffle filters
- Specially designed for low-ceiling kitchens
- Easy installation
- Listed NSF, ETL and 
- Many options available (see reverse)
- Quick delivery

### **Enclosure panels (optional):**

The space between the top of the hood and the ceiling may be closed with stainless steel panels in the same finish as the hood.

### **Construction:**

Exposed hood surface: type 430 stainless steel (304 optional) with #4 finish (brushed). Non-exposed hood surface: stainless steel with #2B finish. Minimum 18-gauge (1.2 mm) thickness. All visible welded joints are polished to match original finish. To meet NFPA- 96 requirements.

### **Installation:**

Suspension (recommended height)

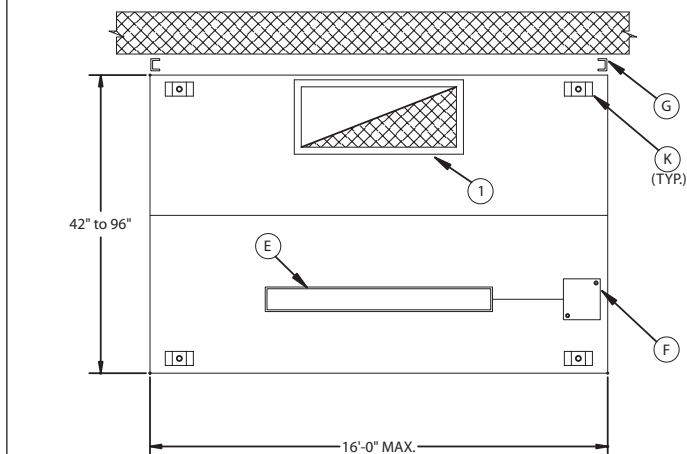
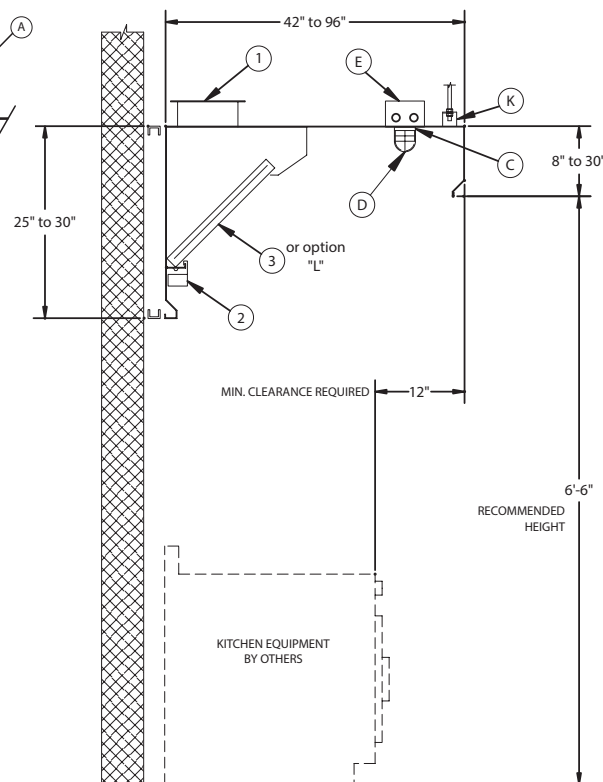
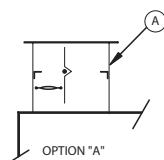
The hood should be installed 6' 6" (1,981 mm) from the floor.

Semi-combustible materials

A clearance of 3" (76 mm) is required when the hood is in contact with semi-combustible materials. As per NFPA-96 standards, a stainless steel spacer will be required.

### **Electrical:**

Junction box and pre-wiring for lighting system may be factory installed if required.



Exhaust 350 CFM (165 L / S) / Linear Ft. *					
Length		Exhaust		Collar/opening 12" (305 mm) x _____	
Feet	mm	CFM	L/S	Inches	mm
3'-6"	1068	1225	580	12	305
4'-0"	1220	1400	660	12	305
4'-6"	1372	1575	745	14	355
5'-0"	1524	1750	825	16	405
5'-6"	1676	1925	910	18	455
6'-0"	1828	2100	990	18	455
6'-6"	1981	2275	1075	20	510
7'-0"	2134	2450	1155	22	560
7'-6"	2286	2625	1240	24	610
8'-0"	2438	2800	1320	26	660
8'-6"	2590	2975	1400	26	660
9'-0"	2743	3150	1485	28	710
9'-6"	2895	3325	1570	30	760
10'-0"	3048	3500	1650	32	810
10'-6"	3200	3675	1735	(2) 16	(2) 405
11'-0"	3352	3850	1815	(2) 18	(2) 455
11'-6"	3505	4025	1900	(2) 18	(2) 455
12'-0"	3657	4200	1980	(2) 18	(2) 455
12'-6"	3810	4375	2065	(2) 20	(2) 510
13'-0"	3962	4550	2145	(2) 20	(2) 510
13'-6"	4115	4725	2230	(2) 22	(2) 560
14'-0"	4267	4900	2310	(2) 22	(2) 560
14'-6"	4420	5075	2395	(2) 22	(2) 560
15'-0"	4572	5250	2475	(2) 24	(2) 610
15'-6"	4724	5425	2560	(2) 24	(2) 610
16'-0"	4877	5600	2640	(2) 26	(2) 660

\* Exhaust for 42" (1,065 mm) and 48" (1,220 mm)-deep hoods.

## Accessories included:

<b>1</b>	Exhaust collar (3" high)
<b>2</b>	Grease receptacle
<b>3</b>	ETL-listed galvanized steel baffle filters
<b>C</b>	Incandescent lights (Quantity recommended: (1) light per 5 linear feet of hood)
<b>G</b>	3" rear spacer for clearance to meet NFPA- 96 requirements
<b>K</b>	Hanging brackets

## Optional accessories: (see section "K" for details)

<b>A</b>	ETL-listed exhaust collar with fire damper
<b>B</b>	ETL-listed exhaust collar with balancing damper
<b>D</b>	Wire guard for incandescent lights
<b>E</b>	36" or 48" fluorescent lights (Quantity recommended: (1) light per 8 linear feet of hood)
<b>F</b>	Junction box and pre-wiring for lighting
<b>H</b>	Enclosure panels, stainless steel with #4 finish, between hood and ceiling
<b>I</b>	PAC-02 programmable control panel
<b>J</b>	End skirts should be used to maximize hood performance
<b>L</b>	ETL-listed stainless steel baffle filters
<b>M</b>	DDSP (Down Discharge Supply Plenum)
<b>N</b>	FDSP (Front Discharge Supply Plenum)
<b>O</b>	ETL-listed end of day damper

	Exhaust VOLUME (CFM / Lin. Ft.)	Internal pressure loss (IN / H <sub>2</sub> O)	Exhaust VOLUME (L/S per linear metre)	Internal pressure loss (Pa)
<b>Light cooking</b>	175	0,30	270	75
<b>Medium cooking</b>	260	0,40	400	100
<b>Heavy cooking</b>	350	0,60	540	150

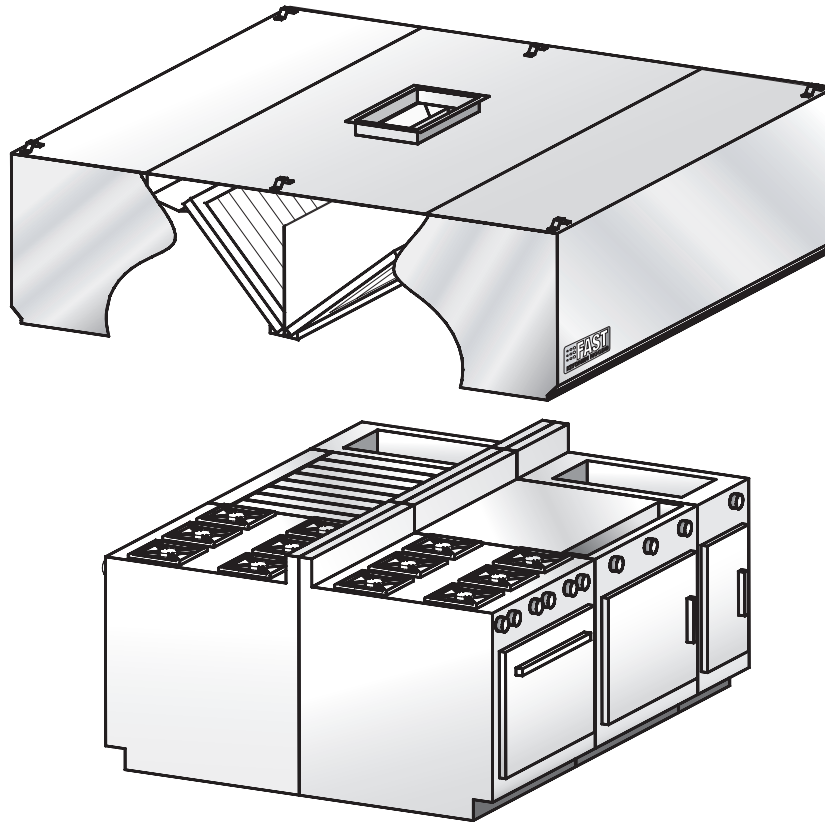




When Time **Matters!**

## Model **SSH-C** - **FILTER HOOD**


**A**



### **Description:**

FAST central island exhaust hood model SSH-C complete with baffle filters. For island hood.

### **Specifications:**

- Constructed of sturdy 18-gauge (1.2 mm) stainless steel
- Available in lengths of 3' 0" to 16' 0" (914 mm to 4,877 mm)
- Washable baffle filters
- Easy installation
- Listed NSF, ETL and 
- Many options available (see reverse)
- Quick delivery

### **Enclosure panels (optional):**

The space between the top of the hood and the ceiling may be closed with stainless steel panels in the same finish as the hood.

### **Construction:**

Exposed hood surface: type 430 stainless steel (304 optional) with #4 finish (brushed). Non-exposed hood surface: stainless steel with #2B finish. Minimum 18-gauge (1.2 mm) thickness. All visible welded joints are polished to match original finish. To meet NFPA- 96 requirements.

### **Installation:**

Suspension (recommended height)

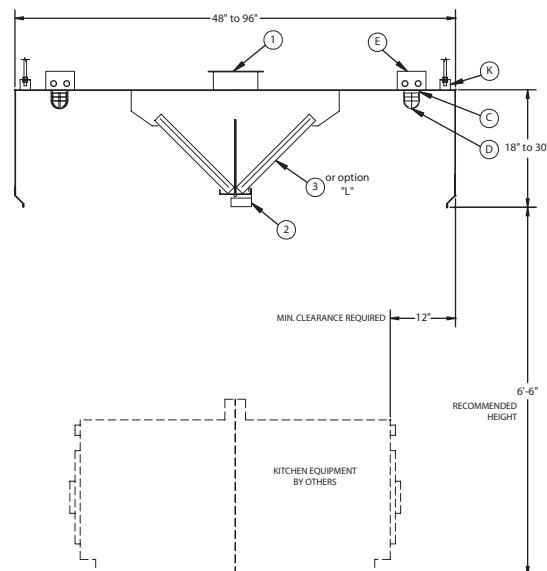
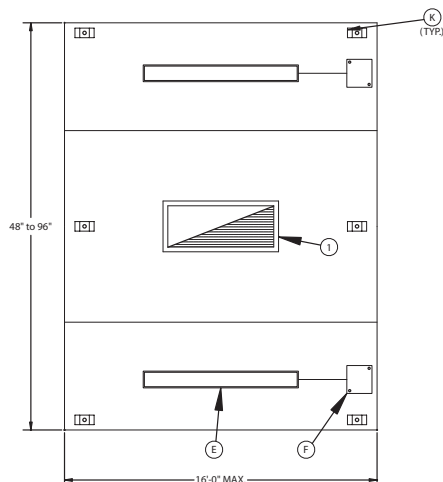
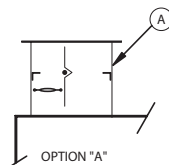
The hood should be installed 6' 6" (1,981 mm) from the floor.

Semi-combustible materials

A clearance of 3" (76 mm) is required when the hood is in contact with semi-combustible materials. As per NFPA-96 standards, a stainless steel spacer will be required.

### **Electrical:**

Junction box and pre-wiring for lighting system may be factory installed if required.



Exhaust 520 CFM (245 L / S) / Linear Ft. *					
Length		Exhaust		Collar/opening 14" (355 mm) x _____	
Feet	mm	CFM	L/S	Inches	mm
3'-6"	1068	1820	860	14	356
4'-0"	1220	2080	982	14	356
4'-6"	1372	2340	1105	16	406
5'-0"	1524	2600	1227	18	457
5'-6"	1676	2860	1350	20	508
6'-0"	1828	3120	1473	22	559
6'-6"	1981	3380	1595	24	610
7'-0"	2134	3640	1718	26	660
7'-6"	2286	3900	1840	28	711
8'-0"	2438	4160	1964	30	762
8'-6"	2590	4420	2086	32	812
9'-0"	2743	4680	2208	34	864
9'-6"	2895	4940	2332	(2) 18	(2) 457
10'-0"	3048	5200	2455	(2) 18	(2) 457
10'-6"	3200	5460	2577	(2) 20	(2) 508
11'-0"	3352	5720	2700	(2) 20	(2) 508
11'-6"	3505	5980	2823	(2) 22	(2) 559
12'-0"	3657	6240	2945	(2) 22	(2) 559
12'-6"	3810	6500	3068	(2) 24	(2) 610
13'-0"	3962	6760	3190	(2) 24	(2) 610
13'-6"	4115	7020	3314	(2) 26	(2) 660
14'-0"	4267	7280	3435	(2) 26	(2) 660
14'-6"	4420	7540	3560	(2) 28	(2) 711
15'-0"	4572	7800	3680	(2) 28	(2) 711
15'-6"	4724	8060	3804	(2) 30	(2) 762
16'-0"	4877	8320	3926	(2) 30	(2) 762

\* Exhaust for 84" (2,130 mm) V-bank filter central island hood.

## Accessories included:

<b>1</b>	Exhaust collar (3" high)
<b>2</b>	Grease receptacle
<b>3</b>	ETL listed galvanized steel baffle filters
<b>C</b>	Incandescent lights (Quantity recommended: (1) light per 5 linear feet of hood)
<b>K</b>	Hanging brackets

## Optional accessories: (see section "K" for details)

<b>A</b>	ETL listed exhaust collar with fire damper
<b>B</b>	ETL listed exhaust collar with balancing damper
<b>D</b>	Wire guard for incandescent lights
<b>E</b>	36" or 48" fluorescent lights (Quantity recommended: (1) light per 8 linear feet of hood)
<b>F</b>	Junction box and pre-wiring for lighting
<b>H</b>	Enclosure panels, stainless steel with #4 finish, between hood and ceiling
<b>I</b>	PAC-02 programmable control panel
<b>J</b>	End skirts should be used to maximize hood performance
<b>L</b>	ETL listed stainless steel baffle filters
<b>M</b>	DDSP (Down Discharge Supply Plenum)
<b>N</b>	FDSP (Front Discharge Supply Plenum)
<b>O</b>	ETL-listed end of day damper

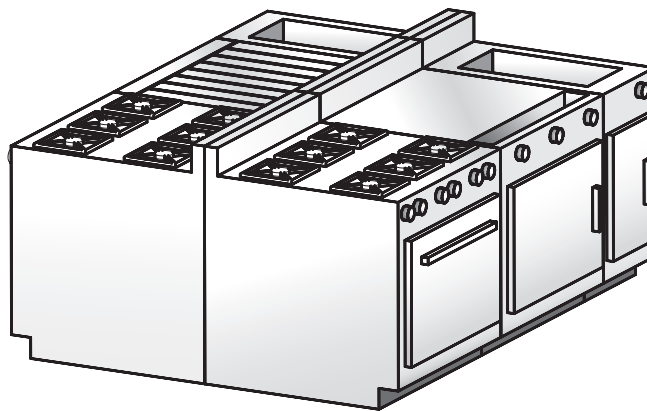
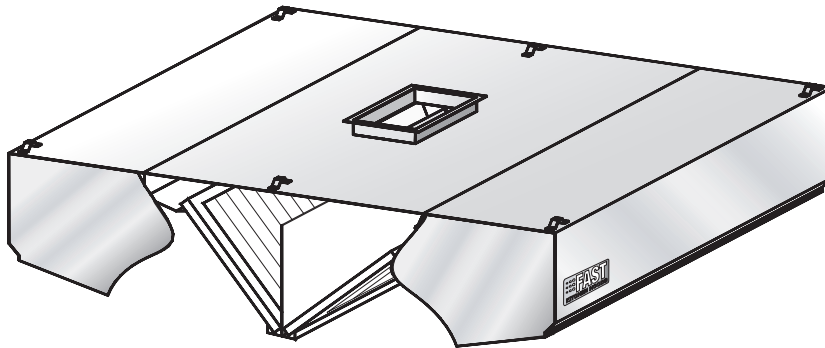
	Exhaust VOLUME (CFM / Lin. Ft.)	Internal pressure loss (IN / H <sub>2</sub> O)	Exhaust VOLUME (L/S per linear metre)	Internal pressure loss (Pa)
<b>Light cooking</b>	450	0,40	696	100
<b>Medium cooking</b>	520	0,40	800	100
<b>Heavy cooking</b>	700	0,60	1080	150



When Time **Matters!**

## Model **LP-SSH-C** - **FILTER HOOD**


**A**



### **Description:**

FAST central island exhaust hood model LP-SSH-C complete with baffle filters. For island hood and low-ceiling kitchens.

### **Specifications:**

- Specially designed for low-ceiling kitchens
- Constructed of sturdy 18-gauge (1.2 mm) stainless steel
- Available in lengths of 3' 0" to 16' 0" (914 mm to 4,877 mm)
- Washable baffle filters
- Easy installation
- Listed NSF, ETL and 
- Many options available (see reverse)
- Quick delivery

### **Enclosure panels (optional):**

The space between the top of the hood and the ceiling may be closed with stainless steel panels in the same finish as the hood.

### **Construction:**

Exposed hood surface: type 430 stainless steel (304 optional) with #4 finish (brushed). Non-exposed hood surface: stainless steel with #2B finish. Minimum 18-gauge (1.2 mm) thickness. All visible welded joints are polished to match original finish. To meet NFPA- 96 requirements.

### **Installation:**

Suspension (recommended height)

The hood should be installed 6' 6" (1,981 mm) from the floor.

Semi-combustible materials

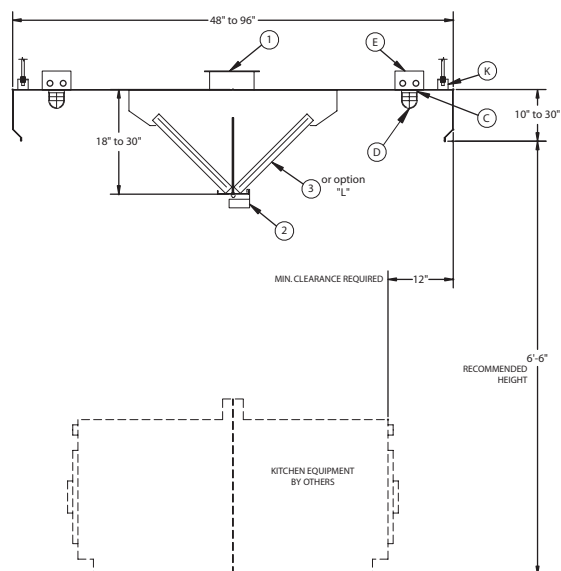
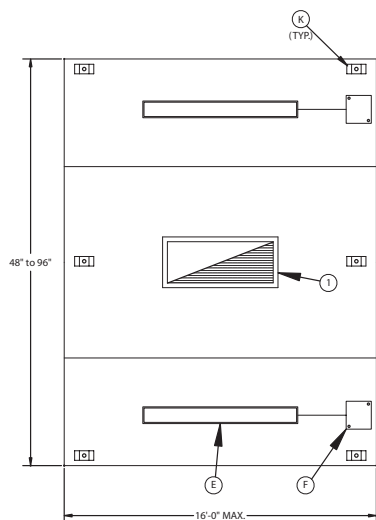
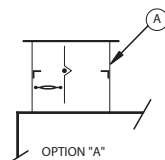
A clearance of 3" (76 mm) is required when the hood is in contact with semi-combustible materials. As per NFPA-96 standards, a stainless steel spacer will be required.

### **Electrical:**

Junction box and pre-wiring for lighting system may be factory installed if required.



Intertek



Exhaust 520 CFM (245 L / S) / Linear Ft. *					
Length		Exhaust		Collar/opening 14" (355 mm) x _____	
Feet	mm	CFM	L/S	Inches	mm
3'-6"	1068	1820	860	14	356
4'-0"	1220	2080	982	14	356
4'-6"	1372	2340	1105	16	406
5'-0"	1524	2600	1227	18	457
5'-6"	1676	2860	1350	20	508
6'-0"	1828	3120	1473	22	559
6'-6"	1981	3380	1595	24	610
7'-0"	2134	3640	1718	26	660
7'-6"	2286	3900	1840	28	711
8'-0"	2438	4160	1964	30	762
8'-6"	2590	4420	2086	32	812
9'-0"	2743	4680	2208	34	864
9'-6"	2895	4940	2332	(2) 18	(2) 457
10'-0"	3048	5200	2455	(2) 18	(2) 457
10'-6"	3200	5460	2577	(2) 20	(2) 508
11'-0"	3352	5720	2700	(2) 20	(2) 508
11'-6"	3505	5980	2823	(2) 22	(2) 559
12'-0"	3657	6240	2945	(2) 22	(2) 559
12'-6"	3810	6500	3068	(2) 24	(2) 610
13'-0"	3962	6760	3190	(2) 24	(2) 610
13'-6"	4115	7020	3314	(2) 26	(2) 660
14'-0"	4267	7280	3435	(2) 26	(2) 660
14'-6"	4420	7540	3560	(2) 28	(2) 711
15'-0"	4572	7800	3680	(2) 28	(2) 711
15'-6"	4724	8060	3804	(2) 30	(2) 762
16'-0"	4877	8320	3926	(2) 30	(2) 762

\* Exhaust for 84" (2,130 mm) V-bank filter central island hood.

Accessories included:	
1	Exhaust collar (3" high)
2	Grease receptacle
3	ETL-listed galvanized steel baffle filters
C	Incandescent lights (Quantity recommended: (1) light per 5 linear feet of hood)
K	Hanging brackets

Optional accessories: (see section "K" for details)	
A	ETL-listed exhaust collar with fire damper
B	ETL-listed exhaust collar with balancing damper
D	Wire guard for incandescent lights
E	36" or 48" fluorescent lights (Quantity recommended: (1) light per 8 linear feet of hood)
F	Junction box and pre-wiring for lighting
H	Enclosure panels, stainless steel with #4 finish, between hood and ceiling
I	PAC-02 programmable control panel
J	End skirts should be used to maximize hood performance
L	ETL-listed stainless steel baffle filters
M	DDSP (Down Discharge Supply Plenum)
N	FDSP (Front Discharge Supply Plenum)
O	ETL-listed end of day damper

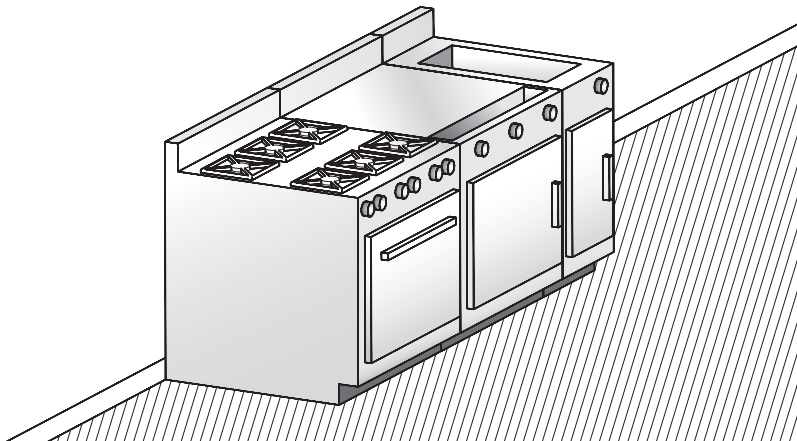
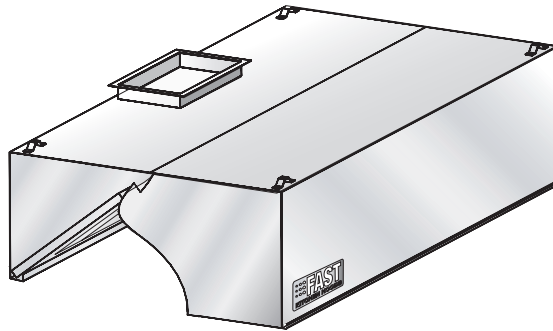
	Exhaust VOLUME (CFM / Lin. Ft.)	Internal pressure loss (IN / H <sub>2</sub> O)	Exhaust VOLUME (L/S per linear metre)	Internal pressure loss (Pa)
Light cooking	450	0,40	696	100
Medium cooking	520	0,40	800	100
Heavy cooking	700	0,60	1080	150



When Time **Matters!**

## Model **SSEH** - **FILTER HOOD**


**A**



### **Description:**

FAST wall-type exhaust hood model SSEH complete with baffle filters.

### **Specifications:**

- Constructed of sturdy 18-gauge (1.2 mm) stainless steel
- Available in lengths of 3' 0" to 16' 0" (914 mm to 4,877 mm)
- Washable baffle filters
- Easy installation
- Listed NSF, ETL and 
- Many options available (see reverse)
- Quick delivery

### **Enclosure panels (optional):**

The space between the top of the hood and the ceiling may be closed with stainless steel panels in the same finish as the hood.

### **Construction:**

Exposed hood surface: type 430 stainless steel (304 optional) with #4 finish (brushed). Non-exposed hood surface: stainless steel with #2B finish. Minimum 18-gauge (1.2 mm) thickness. All visible welded joints are polished to match original finish. To meet NFPA- 96 requirements.

### **Installation:**

Suspension (recommended height)

The hood should be installed 6' 6" (1,981 mm) from the floor.

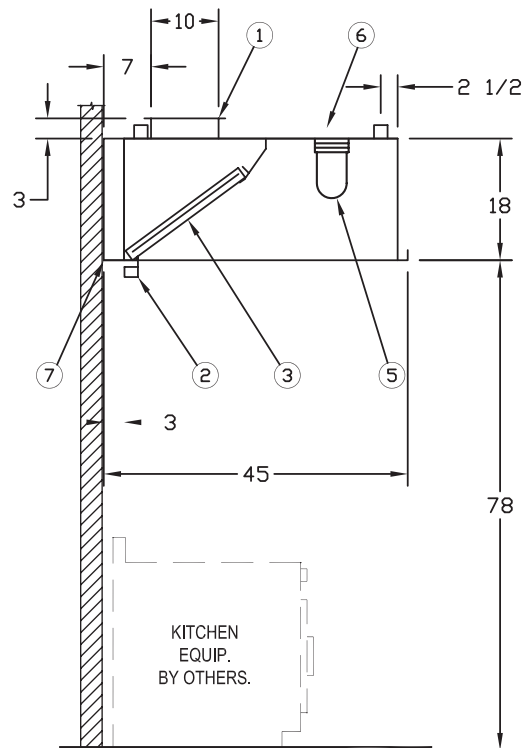
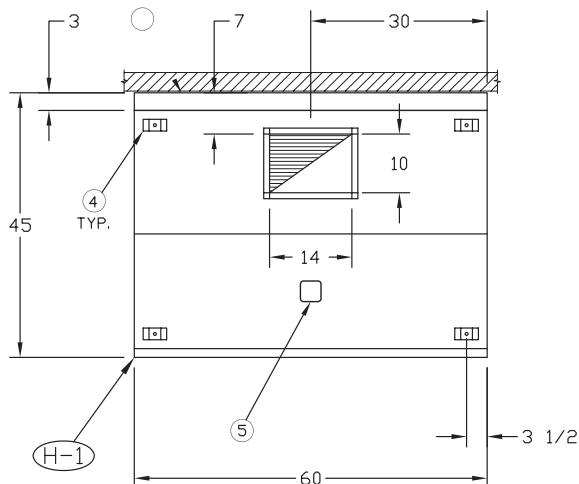
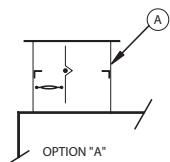
Semi-combustible materials

A clearance of 3" (76 mm) is required when the hood is in contact with semi-combustible materials. As per NFPA-96 standards, a stainless steel spacer will be required.

### **Electrical:**

Junction box and pre-wiring for lighting system may be factory installed if required.





260 CFM (125 L / S) / Linear Ft. *					
Length		Exhaust		Collar/opening 10" (254 mm) x _____	
Feet	mm	CFM	L/S	Inches	mm
3'-6"	1068	910	430	10	254
4'-0"	1220	1040	490	12	305
4'-6"	1372	1170	550	12	305
5'-0"	1524	1300	615	14	355
5'-6"	1676	1430	675	16	405
6'-0"	1828	1560	735	16	405
6'-6"	1981	1690	800	18	457
7'-0"	2134	1820	860	20	508
7'-6"	2286	1950	920	22	558
8'-0"	2438	2080	980	24	610
8'-6"	2590	2210	1045	24	610
9'-0"	2743	2340	1105	26	660
9'-6"	2895	2470	1165	28	711
10'-0"	3048	2600	1230	28	711
10'-6"	3200	2730	1290	30	762
11'-0"	3352	2860	1350	32	812
11'-6"	3505	2960	1410	(2) 16	(2) 405
12'-0"	3657	3120	1470	(2) 18	(2) 457
12'-6"	3810	3250	1535	(2) 18	(2) 457
13'-0"	3962	3380	1595	(2) 18	(2) 457
13'-6"	4115	3510	1635	(2) 20	(2) 508
14'-0"	4267	3640	1720	(2) 20	(2) 508
14'-6"	4420	3770	1780	(2) 20	(2) 508
15'-0"	4572	3900	1840	(2) 22	(2) 558
15'-6"	4724	4030	1900	(2) 22	(2) 558
16'-0"	4877	4160	1965	(2) 24	(2) 610

\* Exhaust for 42" (1,065 mm) and 48" (1,220 mm)-deep hoods.

## Accessories included:

<b>1</b>	Exhaust collar (3" high)
<b>2</b>	Grease receptacle
<b>3</b>	listed galvanized steel baffle filters
<b>C</b>	Incandescent lights (Quantity recommended: (1) light per 5 linear feet of hood)
<b>G</b>	3" rear spacer for clearance to meet NFPA- 96 requirements
<b>K</b>	Hanging brackets

## Optional accessories: (see section "K" for details)

<b>A</b>	listed exhaust collar with fire damper
<b>B</b>	listed exhaust collar with balancing damper
<b>D</b>	Wire guard for incandescent lights
<b>E</b>	36" or 48" fluorescent lights (Quantity recommended: (1) light per 8 linear feet of hood)
<b>F</b>	Junction box and pre-wiring for lighting
<b>H</b>	Enclosure panels, stainless steel with #4 finish, between hood and ceiling
<b>I</b>	PAC-02 programmable control panel
<b>J</b>	End skirts should be used to maximize hood performance
<b>L</b>	listed stainless steel baffle filters
<b>M</b>	DDSP (Down Discharge Supply Plenum)
<b>N</b>	FDSP (Front Discharge Supply Plenum)
<b>O</b>	ETL-listed end of day damper

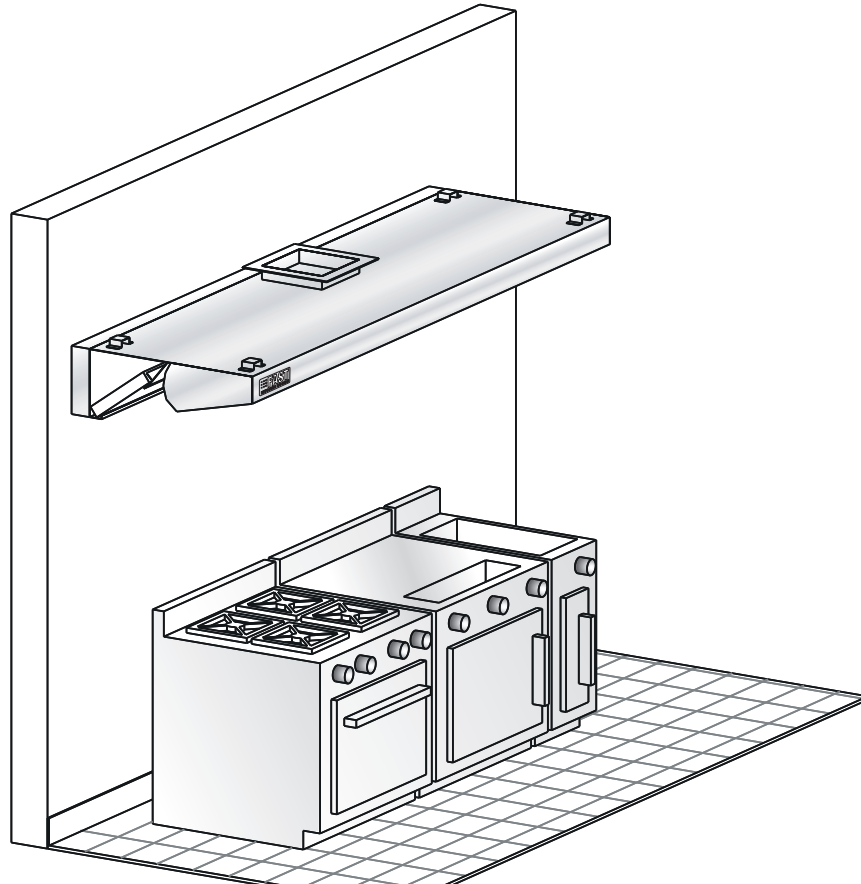
	Exhaust VOLUME (CFM / Lin. Ft.)	Internal pressure loss (IN / H <sub>2</sub> O)	Exhaust VOLUME (L/S per linear metre)	Internal pressure loss (Pa)
<b>Light cooking</b>	175	0,30	270	75
<b>Medium cooking</b>	260	0,40	400	100
<b>Heavy cooking</b>	350	0,60	540	150



When Time **Matters!**

## Model **PL-SSH** - FILTER HOOD

**A**



### **Description:**

FAST wall-type exhaust hood model PL-SSH complete with baffle filters. For low-ceiling kitchens and food trucks.

### **Specifications:**

- Constructed of sturdy 18-gauge (1.2 mm) stainless steel
- Available in lengths of 3' 0" to 16' 0" (914 mm to 4,877 mm)
- Washable baffle filters
- Specially designed for low-ceiling kitchens and food trucks
- Easy installation
- Listed NSF, ETL
- Many options available (see reverse)
- Quick delivery

### **Enclosure panels (optional):**

The space between the top of the hood and the ceiling may be closed with stainless steel panels in the same finish as the hood.

### **Construction:**

Exposed hood surface: type 430 stainless steel (304 optional) with #4 finish (brushed). Non-exposed hood surface: stainless steel with #2B finish. Minimum 18-gauge (1.2 mm) thickness. All visible welded joints are polished to match original finish. To meet NFPA-96 requirements.

### **Installation:**

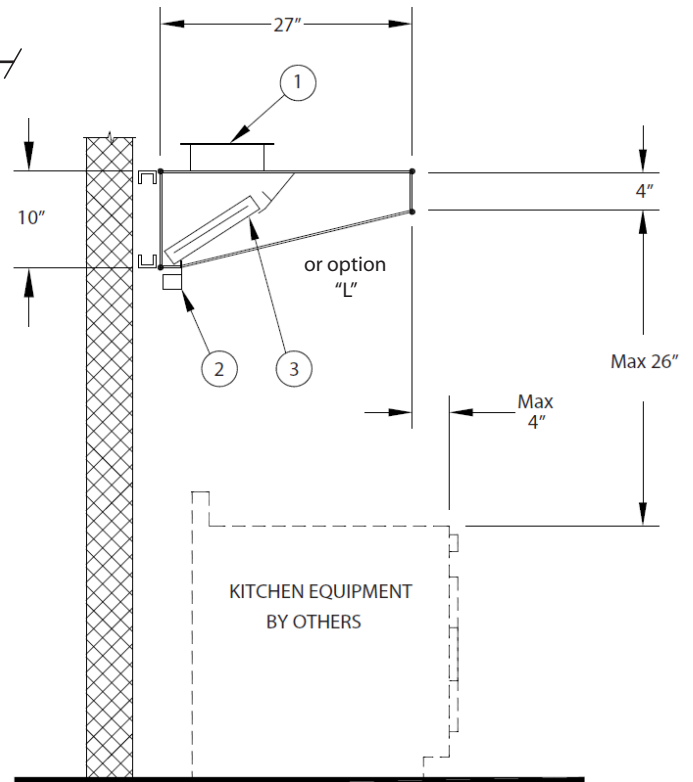
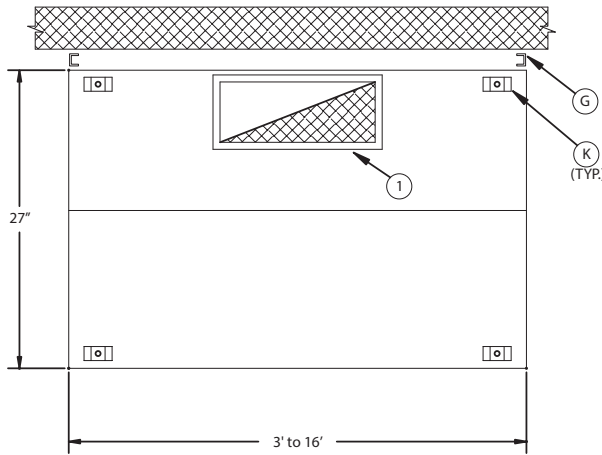
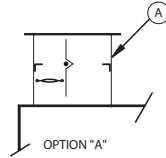
Suspension (recommended height)

The lower front edge of the hood can be installed up to 26" max over the cooking surface.

Semi-combustible materials

A clearance of 3" (76 mm) is required when the hood is in contact with semi-combustible materials. As per NFPA-96 standards, a stainless steel spacer will be required.

**A**



200 PCM (95 L / S) / Linear Ft. *					
Length		Exhaust		Collar/opening 10" (254 mm) x _____	
Feet	mm	CFM	L/S	Inches	mm
3'-0"	1068	600	285	6	152
3'-6"	1068	700	333	7	178
4'-0"	1220	800	380	8	203
4'-6"	1372	900	428	9	229
5'-0"	1524	1000	475	10	254
5'-6"	1676	1100	523	11	279
6'-0"	1828	1200	570	12	305
6'-6"	1981	1300	618	13	330
7'-0"	2134	1400	665	14	356
7'-6"	2286	1500	713	15	381
8'-0"	2438	1600	760	16	406
8'-6"	2590	1700	808	17	432
9'-0"	2743	1800	855	18	457
9'-6"	2895	1900	903	19	483
10'-0"	3048	2000	950	20	508
10'-6"	3200	2100	998	21	533
11'-0"	3352	2200	1045	22	559
11'-6"	3505	2300	1093	23	584
12'-0"	3657	2400	1140	(2) 12	(2) 305
12'-6"	3810	2500	1188	(2) 12	(2) 305
13'-0"	3962	2600	1235	(2) 13	(2) 330
13'-6"	4115	2700	1283	(2) 13	(2) 330
14'-0"	4267	2800	1330	(2) 14	(2) 356
14'-6"	4420	2900	1378	(2) 14	(2) 356
15'-0"	4572	3000	1425	(2) 15	(2) 381
15'-6"	4724	3100	1473	(2) 15	(2) 381
16'-0"	4877	3200	1520	(2) 16	(2) 406

\* Exhaust for 27" (685.4 mm) deep hoods with light or medium cooking.  
Contact us for assistance to determine the appropriate air volume.

## Accessories included:

<b>1</b>	Exhaust collar (3" high)
<b>2</b>	Grease receptacle
<b>3</b>	UL listed galvanized steel baffle filters
<b>G</b>	3" rear spacer for clearance to meet NFPA- 96 requirements
<b>K</b>	Hanging brackets

## Optional accessories: (see section "K" for details)

<b>A</b>	UL listed exhaust collar with fire damper
<b>B</b>	UL listed exhaust collar with balancing damper
<b>H</b>	Enclosure panels, stainless steel with #4 finish, between hood and ceiling
<b>I</b>	PAC-01 programmable control panel
<b>J</b>	End skirts should be used to maximize hood performance
<b>L</b>	UL listed stainless steel baffle filters
<b>O</b>	ETL-listed end of day damper

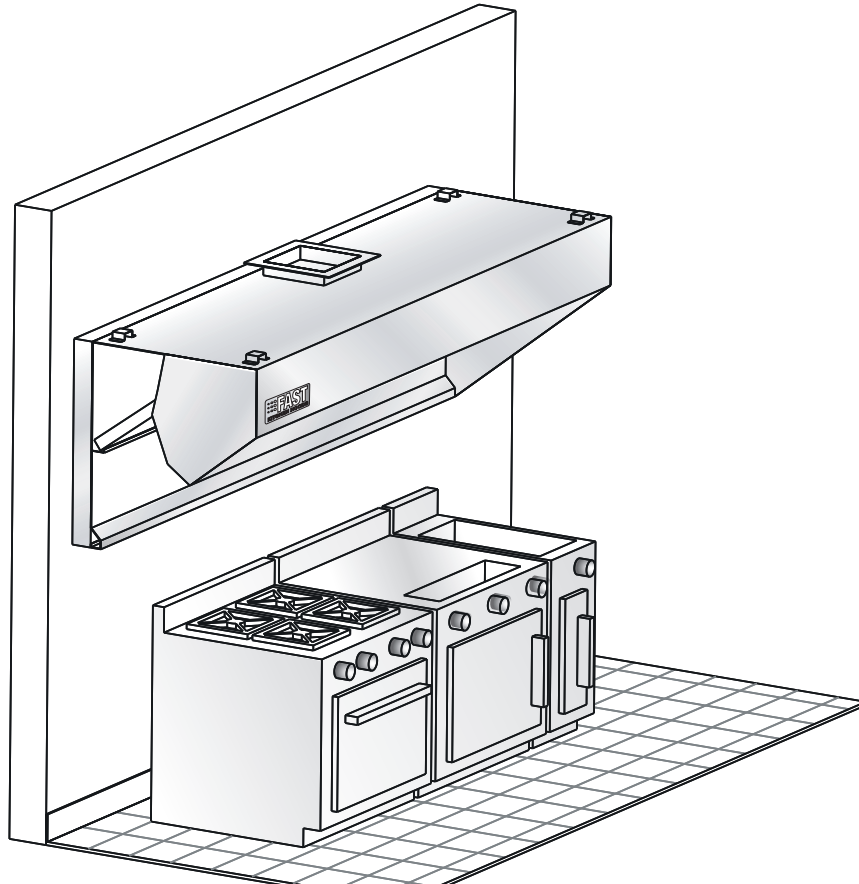
	Exhaust VOLUME (CFM / Lin. Ft.)	Internal pressure loss (IN / H <sub>2</sub> O)	Exhaust VOLUME (L/S per linear metre)	Internal pressure loss (Pa)
Light cooking (450°F)	200	0,30	95	75
Medium cooking (450°F)	200	0,40	95	100
Heavy cooking (600°F)	300	0,60	140	150



When Time **Matters!**

## Model **PP-SSH** - **FILTER HOOD**

**A**



### **Description:**

FAST wall-type exhaust hood model PP-SSH complete with baffle filters. For low-ceiling kitchens and food trucks.

### **Specifications:**

- Constructed of sturdy 18-gauge (1.2 mm) stainless steel
- Available in lengths of 3' 0" to 16' 0" (914 mm to 4,877 mm)
- Washable baffle filters
- Specially designed for low-ceiling kitchens and food trucks
- Easy installation
- Listed NSF, ETL
- Many options available (see reverse)
- Quick delivery

### **Enclosure panels (optional):**

The space between the top of the hood and the ceiling may be closed with stainless steel panels in the same finish as the hood.

### **Construction:**

Exposed hood surface: type 430 stainless steel (304 optional) with #4 finish (brushed). Non-exposed hood surface: stainless steel with #2B finish. Minimum 18-gauge (1.2 mm) thickness. All visible welded joints are polished to match original finish. To meet NFPA-96 requirements.

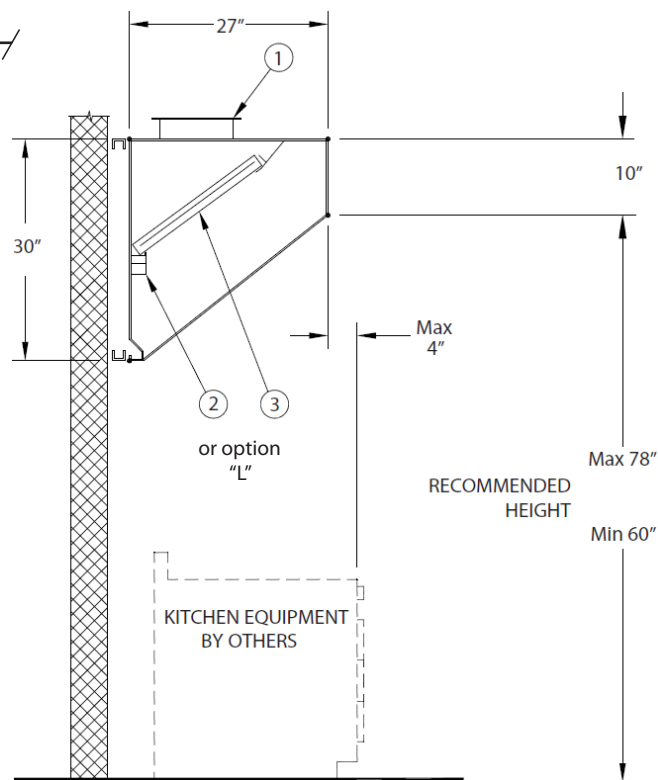
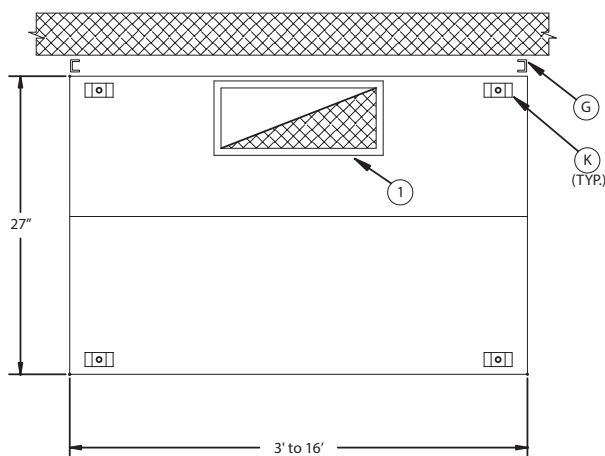
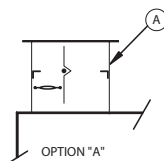
### **Installation:**

Suspension (recommended height)

The lower front edge of the hood can be installed 60" to 78" of the floor.

Semi-combustible materials

A clearance of 3" (76 mm) is required when the hood is in contact with semi-combustible materials. As per NFPA-96 standards, a stainless steel spacer will be required.



200 PCM (95 L / S) / Linear Ft. *					
Length		Exhaust		Collar/opening 10" (254 mm) x _____	
Feet	mm	CFM	L/S	Inches	mm
3'-0"	1068	600	285	6	152
3'-6"	1068	700	333	7	178
4'-0"	1220	800	380	8	203
4'-6"	1372	900	428	9	229
5'-0"	1524	1000	475	10	254
5'-6"	1676	1100	523	11	279
6'-0"	1828	1200	570	12	305
6'-6"	1981	1300	618	13	330
7'-0"	2134	1400	665	14	356
7'-6"	2286	1500	713	15	381
8'-0"	2438	1600	760	16	406
8'-6"	2590	1700	808	17	432
9'-0"	2743	1800	855	18	457
9'-6"	2895	1900	903	19	483
10'-0"	3048	2000	950	20	508
10'-6"	3200	2100	998	21	533
11'-0"	3352	2200	1045	22	559
11'-6"	3505	2300	1093	23	584
12'-0"	3657	2400	1140	(2) 12	(2) 305
12'-6"	3810	2500	1188	(2) 12	(2) 305
13'-0"	3962	2600	1235	(2) 13	(2) 330
13'-6"	4115	2700	1283	(2) 13	(2) 330
14'-0"	4267	2800	1330	(2) 14	(2) 356
14'-6"	4420	2900	1378	(2) 14	(2) 356
15'-0"	4572	3000	1425	(2) 15	(2) 381
15'-6"	4724	3100	1473	(2) 15	(2) 381
16'-0"	4877	3200	1520	(2) 16	(2) 406

\* Exhaust for 27" (685.4 mm) deep hoods with light or medium cooking.  
Contact us for assistance to determine the appropriate air volume.

## Accessories included:

<b>1</b>	Exhaust collar (3" high)
<b>2</b>	Grease receptacle
<b>3</b>	listed galvanized steel baffle filters
<b>G</b>	3" rear spacer for clearance to meet NFPA- 96 requirements
<b>K</b>	Hanging brackets

## Optional accessories: (see section "K" for details)

<b>A</b>	listed exhaust collar with fire damper
<b>B</b>	listed exhaust collar with balancing damper
<b>H</b>	Enclosure panels, stainless steel with #4 finish, between hood and ceiling
<b>I</b>	PAC-01 programmable control panel
<b>J</b>	End skirts should be used to maximize hood performance
<b>L</b>	listed stainless steel baffle filters
<b>O</b>	ETL-listed end of day damper

	Exhaust VOLUME (CFM / Lin. Ft.)	Internal pressure loss (IN / H <sub>2</sub> O)	Exhaust VOLUME (L/S per linear metre)	Internal pressure loss (Pa)
Light cooking (450°F)	200	0,30	95	75
Medium cooking (450°F)	200	0,40	95	100
Heavy cooking (600°F)	300	0,60	140	150